

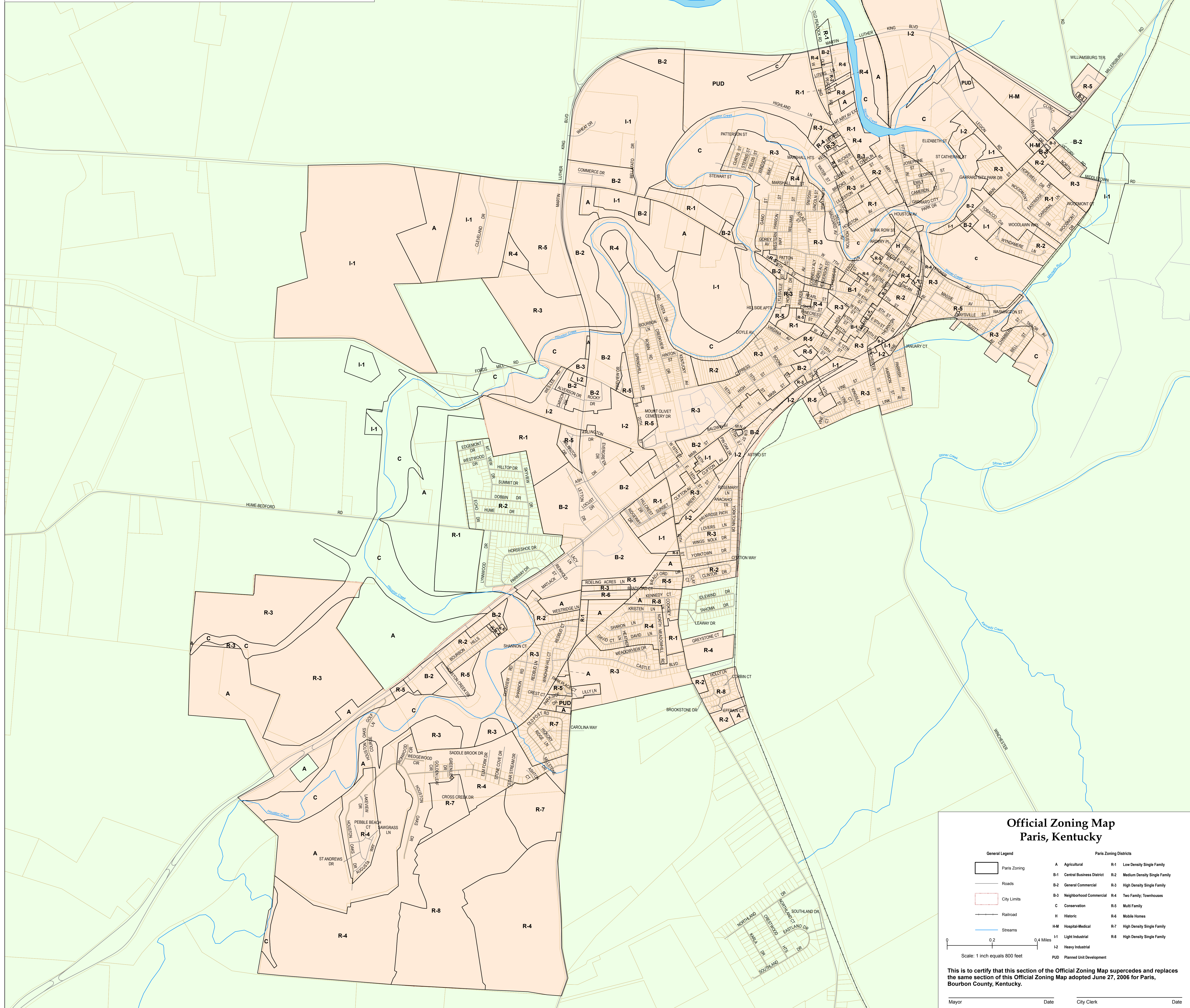
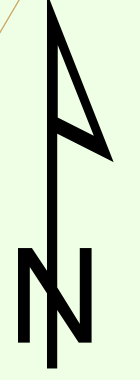
Paris Bourbon County, Kentucky

Official Zoning Map

Prepared For:
City of Paris (2009)



LIMITATION OF LIABILITY: The Bluegrass Area Development District has no reason to believe that there are any inaccuracies or defects in information incorporated in this work, but BGADD makes no representations of any kind, including, but not limited to, the warranties of merchantability or fitness for a particular use, nor any such warranties to be implied, with respect to the information or data furnished herein.



Official Zoning Map Paris, Kentucky

General Legend		Paris Zoning Districts			
	Paris Zoning	A	Agricultural	R-1	Low Density Single Family
	Roads	B-1	Central Business District	R-2	Medium Density Single Family
	City Limits	B-2	General Commercial	R-3	High Density Single Family
	Railroad	B-3	Neighborhood Commercial	R-4	Two Family; Townhouses
	Streams	C	Conservation	R-5	Multi Family
		H	Historic	R-6	Mobile Homes
		H-M	Hospital-Medical	R-7	High Density Single Family
		I-1	Light Industrial	R-8	High Density Single Family
		I-2	Heavy Industrial		
		PUD	Planned Unit Development		

Scale: 1 inch equals 800 feet
0 0.2 0.4 Miles

This is to certify that this section of the Official Zoning Map supercedes and replaces the same section of this Official Zoning Map adopted June 27, 2006 for Paris, Bourbon County, Kentucky.

Mayor _____ Date _____ City Clerk _____ Date _____